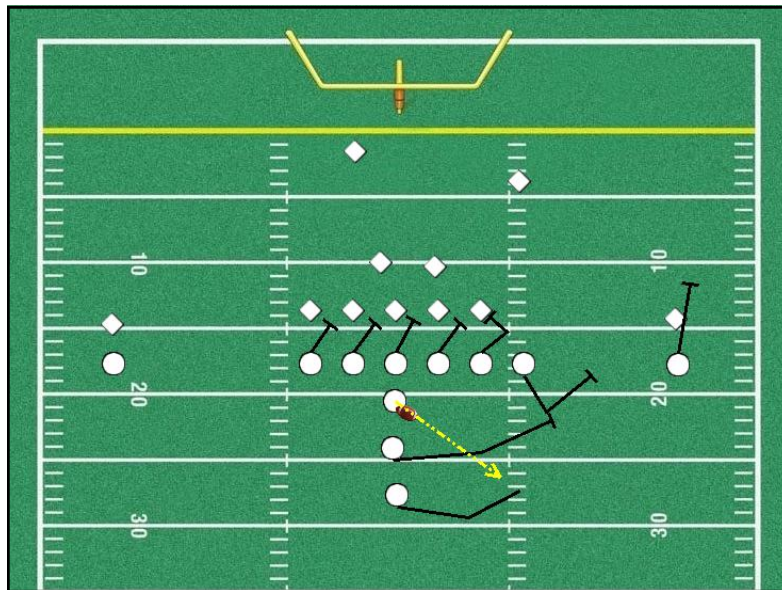


# THE PLAYBOOK



**MINISTRY DESCRIPTIONS**  
STEWARDSHIP 2012

As you consider some of the ways you can fulfill your vows to uphold the Church with your prayers, presence, gifts, service and witness, we hope that this booklet will help you decide where you can glorify God by serving the ministries of the Church.

For each ministry offered in your *Promises to Keep* brochure, there is a brief description listed within this booklet. We invite you to call the ministry contact if you need additional information before making your decision. You may access more detailed ministry descriptions on the MAGI website ([magiweb.org](http://magiweb.org)).

If you would like to learn even more about how God has equipped you to serve, you can take a MAGI (Members Applying Gifts intentionally) workshop. Within the workshop time, you will identify your spiritual gifts, individual approach and your “real zeal” through assessments and class interaction.

If you feel God stirring you to try something new, please keep in mind that training, instruction and guidance are offered for all ministry areas. If you will be continuing in a ministry, please make sure you check it off for 2012.

*\* denotes new opportunity for 2012*

## ADMINISTRATION

Contact Beth Lynn, 704-815-1989 or [beth@matthewsumc.org](mailto:beth@matthewsumc.org) unless otherwise noted.

### **Answer Office Phones:**

Assist the administrative staff by answering office phones on an as-needed basis. Charlotte Kludzuweit, 704-847-6261 or [charlotte@matthewsumc.org](mailto:charlotte@matthewsumc.org).

### **Assist with Mailings:**

Help prepare the many church mailings for all ministries, including stuffing, labeling and sorting.

### **Clerical Ends & Odds:**

“CEOs” - Assist the administrative staff on Thursday mornings with a variety of clerical duties, such as folding, cutting and labeling small-group materials, copying/collating, filing, etc. Instructions and materials provided.

### **Data Entry:**

Assist staff with entering data and maintaining database.

### **Sermon Transcription:**

Assist with transcription of sermon tapes. Transcribe a few sermons every 6 months. Equipment provided – all you need is a computer for typing.

## ADULT DISCIPLESHIP JOURNEY

Contact Kim Layton, 704-815-1913 or [kim@matthewsumc.org](mailto:kim@matthewsumc.org), unless otherwise noted.

### **ALPHA Team Member:**

Alpha consists of 10 weekly sessions and a weekend retreat. During the course, adults have the opportunity to explore the basics of Christianity in both large-group sessions and small-group discussions. These combine to create a safe place to ask honest questions about life, faith and God. Administrative support needed.

### **Curriculum Library Team:**

Assist with maintaining Adult Discipleship Curriculum Library resources, includes entering information in curriculum database and re-shelving returned items.

### **Disciple Bible Study Support Team:**

Assist Disciple Coordinator with administrative tasks such as registration, preparing class lists, room and childcare reservations, training and end-of-year celebration. Must have completed Disciple I. Scott Cooper, 704-844-0693 or [scooper@rcdlaw.net](mailto:scooper@rcdlaw.net)

## ADULT DISCIPLESHIP CONTINUED.....

### **e-connections Online Facilitator:**

Create and facilitate online courses or short-term studies. Experience with online learning platform Moodle will be helpful or a willingness to learn.

### **e-connections Online Learning Community System Administrator:**

Support the database functions of the e-connections software. Work with server host to ensure efficient functioning of database. Experience with online learning platform *Moodle* will be most helpful or a willingness to learn. Contact Hampton Hopkins, 704-821-3002 or [hhopkins@carolina.rr.com](mailto:hhopkins@carolina.rr.com).

### **Life Groups Coordinator:**

To communicate regularly with Life Group leaders and facilitate the formation of new groups.

## **WEEKEND ADULT CLASSES:**

### **Attendance Steward:**

Enter Weekend Adult Class attendance numbers into an existing spreadsheet and submit on a monthly basis. Support and guidance as needed.

### **REACH Team Coordinator:**

Act as liaison between Adult Discipleship Coordinator and REACH teams in Weekend Adult Classes to help connect new members and visitors.

### **SERVE Team Coordinator:**

Act as liaison between Adult Discipleship Coordinator and SERVE teams in Weekend Adult Classes to communicate serving opportunities with the church, community, and beyond.

### **\*TEACH Team Coordinator:**

Act as liaison between Adult Discipleship Coordinator and TEACH teams in Weekend Adult Classes to share information regarding available resources. Help plan training opportunities for Adult classes.

## **MAGI** (Contact Karen Schultz, 704-815-1901 or [karen@matthewsumc.org](mailto:karen@matthewsumc.org).)

### **MAGI Follow-up Caller:**

Contact MAGI workshop graduates 2-3 weeks after they complete the workshop to make sure to foster connection to ministry areas. Must be a MAGI workshop graduate.

### **MAGI Website Maintenance:**

Update MAGI Ministry Descriptions with guidance from MAGI team, to insure accuracy and consistency. Data entry experience helpful. Must be a MAGI workshop graduate.

## CENTRO CRISTIANO HOSANNA

Contact Pastor Diana Wingeier-Rayo at 704-847-6261 or [diana@matthewsumc.org](mailto:diana@matthewsumc.org) unless otherwise noted.

**\*Childcare: Sundays, 12:00-3:00 pm:**

Watch over kids during CCH worship service.

**\*Youth Transportation:**

Drive youth from Monroe, NC to Youth Group at MUMC once a month on Sunday or Wednesday evenings.

**\*Transportation (Bus Drivers):**

Drive people back to Monroe and Wingate once a month after CCH worship

## CHILDREN'S MINISTRY

Contact Madeline Kamp, Autumn Shuping, Gwynn Aycock, or Lisa Groulx at 704-847-6261 unless otherwise noted.

**Children's Leadership Team:**

Serve on a team that dreams, plans and helps implement programs for children. Madeline Kamp, 704-815-1903.

**Design Team:**

Assist with creation of props for Sunday School, VBS and seasonal programs. Madeline Kamp, 704-815-1903.

**Puppetry:**

Serve on a team which will work together to perform puppet shows for the Children's Celebration Worship times.

**Supply Volunteer:**

Take turns restocking supplies in Sunday School boxes and cabinets (once a week or on a rotating basis). Preschool Contact: Gwynn Aycock, 704-815-1908. Elementary Contact: Autumn Shuping, 704-815-1918. Preteen Contact: Madeline Kamp, 704-815-1903.

**Sunday AM Preschool or Elementary Assistant:**

Work with Children's Ministries staff on Sunday mornings coordinating leaders and assisting parents.

**Sunday AM Receptionist:**

Greet and direct visitors on Sunday mornings from Noah's Ark Welcome Desk. Gwynn Aycock, 704-815-1908.

## CHILDREN'S MINISTRY CONTINUED...

### **CHRISTIAN EDUCATION:**

#### **Rotational Sunday School (1st – 3rd grade):**

Serve as a Shepherd or Workshop Leader for elementary-age children. Autumn Shuping, 704-815-1918.

#### **Living Stones (4th grade Sunday School):**

Share your faith through activities, current Christian artists, and study of the Scriptures. Madeline Kamp, 704-815-1903.

#### **The Rock (5th Grade Sunday School):**

Be a friend and leader to a small group of Fifth Graders each Sunday morning. Madeline Kamp, 704-815-1903.

#### **Preschool Sunday School Teacher:**

Teacher for 3 year olds to Kindergarten children. Can rotate with other leaders. Gwynn Aycock, 704-815-1908.

#### **Sunday School Substitute Teacher:**

Teach on an as-needed basis. Madeline Kamp, 704-815-1903.

#### **Sunday Sacks:**

Replenish materials in Sunday Sacks for children. Sandra Powell, 704-821-8382.

### **CONFIRMATION (6TH GRADE):**

Contact Madeline Kamp, 704-815-1903.

#### **Confirmation Mentor:**

Serve as a "friend-in-faith" to one of the Confirmands, meeting with them one or two times monthly, January – May.

#### **Confirmation Teacher:**

Lead a classroom through Confirmation.

#### **Confirmation Team:**

Assist with planning and implementation of outings, "Hand and Heart" service days and retreats.

### **CHILDREN'S WORSHIP:**

#### **Children's Church Leader (4 yrs – Kindergarten):**

Use provided curriculum and activities to lead children in a time of learning about the Bible through stories, games, crafts, and activities during Sunday worship. Gwynn Aycock, 704-815-1908.

## CHILDREN'S MINISTRY CONTINUED...

### **CHILDREN'S WORSHIP continued....**

#### **The Deep Family Worship:**

Become a part of the different teams to create a monthly worship experience for families. Please specify team on form: Sign-In/Security, Music/Dance, Drama, Tech, Props, Setup/Breakdown.

Madeline Kamp, 704-815-1903, or Patti Curry, 704-847-6173.

### **MISSION AND OUTREACH:**

#### **International Children's Outreach:**

Be part of a support team to assist children from other countries in obtaining appropriate medical treatment. May include hosting a child or translator, arranging for medical services or providing assistance to host families.

Dan & Beth Meyer, 704-708-4222.

### **NURSERY:**

#### **Nursery Coordinator:**

Plan and assist with coordination of nursery facilities, volunteers and activities. Gwynn Aycock, 704-815-1908 or [gwynn@matthewsumc.org](mailto:gwynn@matthewsumc.org).

#### **Nursery Volunteer:**

Help in the nursery during Worship and/or during special events.

Robin Havican, 704-698-0180 or [robinhavican@ctc.net](mailto:robinhavican@ctc.net).

### **SEASONAL:**

#### **Children's Nativity:**

Assist with preparations for the annual Christmas pageant, including coordinating for one service, dressing children, repairing and/or sewing costumes, publicity and clean-up. Pam Lang, 704-845-8354.

#### **Consignment Sale:**

Help with planning, advertising, setup, cleanup of semi-annual consignment sale. Donna Sand, 704-815-1945 or [consignment@matthewsumc.org](mailto:consignment@matthewsumc.org).

#### **VBS Leadership Team:**

Serve in an administrative role to help select curriculum, plan VBS, secure teachers, provide publicity and assure implementation. January – June, 2012. Autumn Shuping, 704-815-1918.

#### **VBS Volunteer:**

Serve as a game leader, craft leader, a story teller or a crew leader.

June 18-22, 2012.

## CHILDREN'S MINISTRY CONTINUED...

### **SMALL GROUPS:**

#### **"Between":**

Monday afternoon Bible study for 4th-5th grade girls beginning in September. Assist with preparation of supplies. Madeline Kamp, 704-815-1903 or Elaine Swaim, 704-846-6472.

#### **"Created by God":**

Be a part of a team helping children understand the gift of human sexuality. Lynne LeBlanc, 704-846-5096.

## COLLEGE/YOUNG ADULT MINISTRY

Contact Laurie Little, 704-815-1911 or [laurie@matthewsumc.org](mailto:laurie@matthewsumc.org).

#### **\*College Age Ministry:**

Assist with Sunday School; help with mailings/communication

#### **College Connection:**

Be a *Friend in Faith* to a college or graduate student away at school. In addition to praying for this student, you may send care packages, emails, cards, etc. Carol Hatcher, 704-847-5884.

#### **\*Young Adult Ministry:**

Assist with organizing fellowship/service opportunities.

#### **\*Young Adult Bible Study:**

Lead a short-term Bible study for young adults.

## CONGREGATIONAL CARE

Contact Pastor Paul Craig, 704-815-1912 or [paul@matthewsumc.org](mailto:paul@matthewsumc.org) unless otherwise noted.

#### **Faith Partners:**

Faith Partners offers to our MUMC family confidential education, intervention, counseling, and referrals concerning addiction issues. Pastor Paul Craig, 704-815-1912 or Richard Page, 704-307-6800.

#### **Homebound Visitation Team:**

Monthly visit to someone unable to attend church or unable to drive.

#### **Hospital Visitation Team:**

Visiting non-critical patients in the hospital on a rotational basis.

## CONGREGATIONAL CARE CONTINUED...

### **Ministry At Work:**

Meets Thursday evenings to serve the unemployed and under-employed to help them get back into the workplace. Bob Vaughn, 704-708-9286

### **Prayer & Card Ministry:**

Pray for and send cards to comfort those recovering from an illness or life crisis. Cards and postage provided, if needed.

### **Stephen Ministry:**

Trained lay persons from the congregation provide confidential Christian one-to-one care to those who are experiencing all kinds of life need and circumstances. Irene Smith, 704-882-9020; Richard Martin, 704-561-0909; or Pastor Paul Craig, 704-815-1912.

## DAILY BREAD MINISTRY

Contact Judy Suarez, 704-815-1906 unless otherwise noted.

### **Bounce Back Backpack Ministry:**

Deliver filled packs to local elementary schools or return to Matthews Help Center.

### **Chain of Compassion Coordinator:**

For one month, coordinate volunteers to be of service to a family who has experienced the loss of a loved one.

### **Chain of Compassion Team Member:**

Help a family who has experienced the loss of a loved one with practical tasks such as answering phones, providing childcare or transportation, running errands or helping around the house...or help with receptions following funeral services.

### **Coffee House Helper:**

Assist with setup and cleanup of Coffee House. Sun. 7:45-11:15 am.

### **Decorate for Special Events:**

Coordinate with special event team, purchase and decorate for event.

### **Deliver Meals:**

Take prepared meals to families in need on 1st and 3rd Wednesday or 2nd and 4th Thursday of each month.

### **Kitchen Cleanup:**

Periodically join a group in cleaning the kitchen from top to bottom.

## DAILY BREAD MINISTRY CONTINUED...

**Meal Preparation, Setup, Serve, or Cleanup:**

Assist in with meals for Church events.

**Phone Caller:**

Call volunteers for specific service opportunities from list provided by ministry coordinator. Barb Heslin, 704-541-1955.

**Provide Meals:**

Prepare a meal for a family in need.

**Snack/Cookie Provider:**

Bake a batch of cookies or provide a snack on an as-needed basis for Church events. Barb Heslin, 704-541-0955.

**Special Event Host/Hostess:**

Welcome guests to Church events and seat them.

## FACILITY CARE

Contact Joni Haiduc, 704-847-6261 or [joni@matthewsumc.org](mailto:joni@matthewsumc.org).

**Event Setup Crew:**

Assist maintenance staff with needed setups for Church events.

**General Repairs:**

Provide general assistance with maintenance of Church facility.

**Landscaping:**

Provide general assistance with upkeep of Church grounds.

**Painting Crew:**

Join a ministry team to paint a specific portion of the Church.

**Special Cleaning Projects:**

Assist in keeping facility clean.

## HOSPITALITY & INVITATION

Contact Karen, 704-815-1901 or [karen@matthewsumc.org](mailto:karen@matthewsumc.org), unless otherwise noted.

### **\*Creative Invitation Team:**

As part of a team, develop creative ways to promote invitational spirit in the congregation. Maintain awareness and provide opportunities and resources (invitation cards, short newsletter items).

### **\*Faith Sharing Resource Team**

Be part of a team that provides learning and practice opportunities for people who want to be more comfortable sharing their faith and their faith story.

### **Greeters:**

Greet worshippers and provide information and/or directions. Linda Lyons, [lyonscapa@yahoo.com](mailto:lyonscapa@yahoo.com).

### **Information Center Stocker:**

Check Information Center weekly to make sure it is well stocked and that information offered is current and up to date. Replenish materials as needed. Jan Davis, [gregandjan@hotmail.com](mailto:gregandjan@hotmail.com).

### **Lemonade Outreach and Special Events:**

Help set up and serve lemonade during Matthews Alive on Labor Day weekend. May also have similar activities during other events occurring in Matthews. Evie Humphries, [eviesue@carolina.rr.com](mailto:eviesue@carolina.rr.com).

### **Outreach Caller:**

One Sunday every other month, make phone calls to "First Time Visitors." Brief call includes a "Thanks for worshipping with us," and "We hope you'll come back!" Nancy Harris, [nharris6@mac.com](mailto:nharris6@mac.com).

### **Parking Lot Greeters:**

Assist/direct worshippers in parking lot on Sunday morning. Offer a friendly greeting and assistance as they enter for worship and classes.

### **\*Radical Hospitality Team Member**

Looking for "over and above" people to take hospitality to a new level. Treat new visitors as if they were guests in your own home, one family at a time. You may accompany them to worship, sit with them, introduce them to others, help them get connected, answer their questions about MUMC; give them your undivided attention. Radical training provided.

## HOSPITALITY & INVITATION CONTINUED...

### **Sunday Morning Guide:**

Be available on Sunday mornings to escort visitors to classrooms, nurseries, or give a short tour of the building; approximately one Sunday each month. Marianne Bowman, [marianne.bowman@yahoo.com](mailto:marianne.bowman@yahoo.com).

### **Welcome Center Volunteer:**

Assist visitors in obtaining information, finding classrooms, etc. Training and guidelines provided. Marianne Bowman, [marianne.bowman@yahoo.com](mailto:marianne.bowman@yahoo.com).

## LIBRARY

Contact Susan Martin, 704-535-8620 or [sachmar@myway.com](mailto:sachmar@myway.com), or Tyleta Morgan, 704-849-9198 or [tyleta.morgan@windstream.net](mailto:tyleta.morgan@windstream.net).

### **Library Volunteer Coordinator:**

Coordinate and schedule volunteers to work in the Library.

### **Library Team Member:**

Help with publicity, re-shelving books and general upkeep of the Library.

## MEMBERSHIP

Contact Karen Schultz, 704-815-1901 or [karen@matthewsumc.org](mailto:karen@matthewsumc.org), unless otherwise noted.

### **Count Me In! Hospitality Team:**

As part of a team, provide hospitality to prospective new members who are exploring what membership at MUMC is all about. Greet participants, distribute materials, set-up and serve refreshments, encourage interactions with others, just as you would a guest in your own home. Time commitment: Class is 2 hours (plus additional time to set-up/clean up) AND must be available for all four worship services on joining weekend.

### **Discuss Membership Caller:**

Make phone calls to families who check "Desire to Discuss Membership" on the attendance pad. Provide information about membership classes. Volunteers call each week for a month at a time. Bonnie Avery, 704-291-7919.

## MEMBERSHIP CONTINUED...

**\*New Member Nurture Team:**

Assist a new member family to get connected. Keep in touch by phone or meet them for worship or other activities.

**Pew Pad Attendance Collector:**

Collect pew pad attendance sheets following the 11:00 am Sunday service. May be done as individual or in groups.

**Pictorial Directory (Dec. 15-17, 2011 and March 6-24, 2012)**

**\*Host/Hostess:**

Greet families as they arrive for their scheduled photo session. Assist with them with required paperwork.

**\*Welcome Center Sign-ups:**

Assist with scheduling of appointments at the Welcome Center for the Pictorial Directory .



## MISSIONS

We look forward to sharing mission opportunities with you in the Winter of 2012. Global Impact Weekend will take place February 15<sup>th</sup>-19<sup>th</sup>. Stay tuned for more info.

## MUSIC & WORSHIP ARTS MINISTRY

Contact Peter Leo, 704-815-1907 or [peter@matthewsumc.org](mailto:peter@matthewsumc.org).

**FOR MORE MUSIC & WORSHIP ARTS MINISTRY INFORMATION,  
PLEASE GO TO THE CHURCH WEBSITE: [www.matthewsumc.org](http://www.matthewsumc.org)**

### **Accompanist (Children, Youth and/or Adult):**

Play for one of our ensembles, choirs, or substitute for an accompanist.

Kathy White, 704-815-1940 or [kathy@matthewsumc.org](mailto:kathy@matthewsumc.org)

### **Children's Music Ministry Volunteer**

Assist with one of the children's choirs.

Weston Burroughs, 704-815-1915 or [weston@matthewsumc.org](mailto:weston@matthewsumc.org)

### **Drama Team:**

Participate in worship involving drama to share the word of God.

Patti Curry, 704-619-0659 or [pcurry22@gmail.com](mailto:pcurry22@gmail.com)

### **Instrumental Music/Matthews Brass:**

Play in worship; accompany the Sanctuary Choir and other ensembles.

Bob Jackson, 704-996-6510 or [rjackson84@carolina.rr.com](mailto:rjackson84@carolina.rr.com)

### **Joyful Ringers:**

Handbell choir rings in worship from September-May.

Kathy White, 704-815-1940 or [kathy@matthewsumc.org](mailto:kathy@matthewsumc.org)

### **Melody Makers:**

Senior Adult Choir; Performs primarily in the community

Kathy White, 704-815-1940 at [kathy@matthewsumc.org](mailto:kathy@matthewsumc.org)

### **Praise Team:**

Vocal or band ensemble leads music at the Sunday 9:40 am worship service. Larry Yancey, 704-815-1909 or [LarryY@matthewsumc.org](mailto:LarryY@matthewsumc.org)

### **Sanctuary Choir:**

Lead worship through music at 8:20 and/or 11:00 am Sunday services.

Peter Leo, 704-815-1907 or [peter@matthewsumc.org](mailto:peter@matthewsumc.org)

### **Youth Choir Ministry Volunteer:**

Assist as needed.

Craig Estep, 704-577-2113 or [candhstep@carolina.rr.com](mailto:candhstep@carolina.rr.com)

**MEDIA TECHNOLOGY:** Contact Shawn Allred, 704-815-1918 or [shawn@matthewsumc.org](mailto:shawn@matthewsumc.org)

**Photography:**

Take photos of special Church events.

**Presentation Team Member:**

Create and/or operate computer-generated presentations for worship services. **Training provided.**

**Sound Board Operator:**

Operate sound and video equipment during worship services. **Training provided.**

**Video Production:**

Produce/ help produce videos for special Church events or worship services.

**WORSHIP SERVICE TEAMS:** Contact Elaine Swaim, 704-815-1997 or [elaine@matthewsumc.org](mailto:elaine@matthewsumc.org) unless noted otherwise.

**Acolyte Shepherd:**

Advise acolytes of their duties for worship services.

Lisa Overbey, 704-841-7686 or [dramamama62@windstream.net](mailto:dramamama62@windstream.net)

**Advent/Lent Volunteer Coordinator:**

Work at the Welcome Center two weekends to schedule volunteers to participate in Advent/Lent services.

**Altar Guild:**

Behind-the-scenes worship preparation including filling altar candles and setting up for baptisms.

**\*Baptism Host/Hostess:**

Meet with baptism family before the service and assist them to their seats in the sanctuary.

**Communion Assistants:**

Assist Pastors in serving Communion during worship services.

**Lay Readers:**

Participate in reading scripture during worship services.

Teresa Clark, 704-815-1915 or [teressa@matthewsumc.org](mailto:teressa@matthewsumc.org)

**Sanctuary Flowers Volunteer:**

Pick up arrangements from florist and deliver flowers to nursing homes after worship.

**Sanctuary Volunteer:**

Replenish pews with worship materials.

**Ushers:**

Greet and help seat worshippers, distribute bulletins, collect offering, verify attendance and perform other duties as requested.

## **RAINBOW MINISTRY (SPECIAL NEEDS MINISTRY)**

Contact Laurie Little, 704-815-1911 or [laurie@matthewsumc.org](mailto:laurie@matthewsumc.org), unless otherwise noted.

### **Parents Night Out:**

Adults assist youth as they care for children with special needs or serve as companion for youth with special needs (Wed. nights).

### **Transportation:**

Provide transportation for children with special needs during Rainbow Express Camp or help provide transportation for field trips.

## **RAINBOW EXPRESS DAY CAMP: July 9-13, 2012**

### **Assist in Camp:**

Serve alongside Youth in assisting with week-long day camp for special needs children.

### **“Nurse for a Day”:**

Help with any medical emergencies or issues during Rainbow Express Day Camp. Also help youth (if needed) in administering medication, etc.

## **SUNDAY SCHOOL:**

### **Assist in Sunday School for Children with Special Needs:**

Assist in class by helping with lessons, songs and crafts.  
Trish Tanger, 704-849-9541

### **\*Assist in Sunday School for Youth/Young Adults with Special Needs:**

### **Special Needs Buddy:**

Work one-on-one to be a “Buddy” for a child with Special Needs during Sunday School, Confirmation, or other activities with “typical” children where the child might need a little extra guidance or attention. Madeline Kamp, 704-815-1903 or [madeline@matthewsumc.org](mailto:madeline@matthewsumc.org).

## RECREATION MINISTRY

Contact Alicia Pelter, 704-815-1980, unless otherwise noted.

### **Care of Recreation and Fitness Equipment:**

Sanitize mats & weights, fill stability balls, check equipment for deterioration, and help with maintenance of equipment.

### **Food and Fellowship Coordinator:**

Organize monthly luncheons at local restaurants for recreation ministry groups.

### **Spirit Kids Program:**

Help with children's recreational activities by setting up equipment, spotting children while they are using equipment, and providing prayer/spiritual guidance as needed. Classes held Fridays 11:50 - 1:05 (ages 3-5). Sessions run January-April and September-December.

## SENIOR ADULT MINISTRY

Contact Lisa Talley, 704-815-1917 or [lisa@matthewsumc.org](mailto:lisa@matthewsumc.org), unless otherwise noted.

### **\*Dance Ministry Volunteer:**

Assist with events or phone calls with Dance Instructor. Lou Holmes, 704-635-8019.

### **\*Heavenly Hearts & Hands Ministry:**

Volunteer to sew or give donations of sewing supplies and/or fabrics. Evelyn Jones, 704-849-8218

### **\*Newcomers Ministry:**

Assist with setting up. Sharon Morgan, 704-821-2591.

### **Small Group Leader:**

Lead a Senior Adult small group project or study. Meet weekly or monthly.

### **Senior Adult Ministry Volunteer**

Assist in mailings, copying, phone calling, & emailing.

### **Travel Ministry:**

Assist in travel planning, phone calling, & emailing. Fran O'Brien 704-821-7142.

## YOUTH MINISTRY

Contact Laurie Little, 704-815-1911 or [laurie@matthewsumc.org](mailto:laurie@matthewsumc.org).

### **Basketball:**

Be available to monitor gym during youth basketball games, assist with coaching, etc.

### **Short-Term Missions:**

Work alongside youth through local projects such as home repair, painting, yard work, etc.

### **Snack Supper:**

Share responsibility of providing pizza on Sunday evenings for UMYF "Café."

### **Summer Wednesday Night Events:**

Chaperone various one-time youth events on Wednesdays during the summer.

### **Sunday UMYF:**

Help leaders where needed.

### **Sunday School Assistant:**

Assist designated teacher in a youth class.

### **Sunday School Teacher:**

Lead youth as they discover Biblical truths.

### **Wednesday Night Discipleship Groups:**

Drive group to activity or assist leader with hour-long small groups.

### **Youth Confirmation Mentor:**

Serve as a friend and guide to youth going through the Confirmation experience toward Church membership.

### **Youth Trip Transportation:**

Drive youth to local/out-of-town activities.

## MISCELLANEOUS

Contact the Church Office, 704-847-6261, unless otherwise noted.

### **Boy Scouts:**

MUMC sponsors Cub Scout Pack 214 for grades 1-5 (Susan Vandervet, 704-849-8630) and Boy Scout Troop 39 for grades 6-12 (Dan Latta, 704-846-9520).

### **Calligraphy:**

On an as-needed basis for Bibles, certificates, etc.

### **Church Historical Team:**

Update and maintain archival church material. Tyleta Morgan, 704-849-9198.

### **Create Bulletin Boards:**

Decorate bulletin boards around Church facility to advertise upcoming events or ministries. Concepts and materials provided by the ministry area making the request.

### **Girl Scouts:**

For girls ages 5-18. Meetings at MUMC on Monday or Thursday evenings. Beth Meyer, 704-708-4222.

### **Graphic Design/Desktop Publishing:**

Provide layout/creative ideas for special Church publications (flyers, bookmarks, invitation cards, etc.)

### **Lifeline Devotion Author:**

Contribute written devotional on a weekly basis about once per quarter to be emailed and posted on our Church website. Devotions are typically based on the sermon topic or season of the year.

### **RAIN (Regional Aids Interfaith Network):**

Care teams offer spiritual, emotional, and practical support for persons with HIV/AIDS and their families through personal care, meal preparation, phone and letter/card contact.

### **Sewing:**

On an as-needed basis for various ministries. Materials and direction will be provided.

### **Social Justice Committee:**

Learn and teach others about the Social Principles of the United Methodist Church. Trish Pegram, 704-846-2564.

Please prayerfully consider how  
you will serve in 2012.  
Bring your completed  
***Promises to Keep & Estimate of Giving Cards***  
(mailed to homes the week of October 18<sup>th</sup>)  
to any worship service on  
Personal Commitment Sunday (November 6<sup>th</sup>).

Extra Commitment Cards are available  
in the Church Office.

You may also complete your Estimate of Giving online at  
[www.matthewsumc.org](http://www.matthewsumc.org). Click on the Stewardship tab & you will  
be directed to the Stewardship page where you will see how to  
complete this online.

For more information on volunteering in any ministry area,  
visit our MAGI website at [magiweb.org](http://magiweb.org).  
Click on ***Ministries***, then click ***by area*** on the  
left side of the screen. Use **filter** to select desired ministry area.  
Scroll down until you find  
the ministry area you're interested in.

